

Applying to Exhibit at Anteros:

Anyone with connections in Norfolk, Suffolk and Cambridgeshire may apply to exhibit at Anteros. Staff work closely with local artists to enable them to present a professional standard exhibition, we can offer additional support to those who need it. Anteros can offer additional support through help with both physical and digital marketing, hanging artwork, curating the exhibition and more. The gallery actively celebrates diversity, promotes equality, tackles discrimination and fosters equal opportunities.

The Anteros Curation Committee is responsible for selecting the exhibitions that take place at Anteros Arts Foundation. The committee comprises of management staff and a trustee representative and meetings take place every two to three months depending on the number of applications.

Together the committee assess applications using the following criteria:

Will the artwork sell?

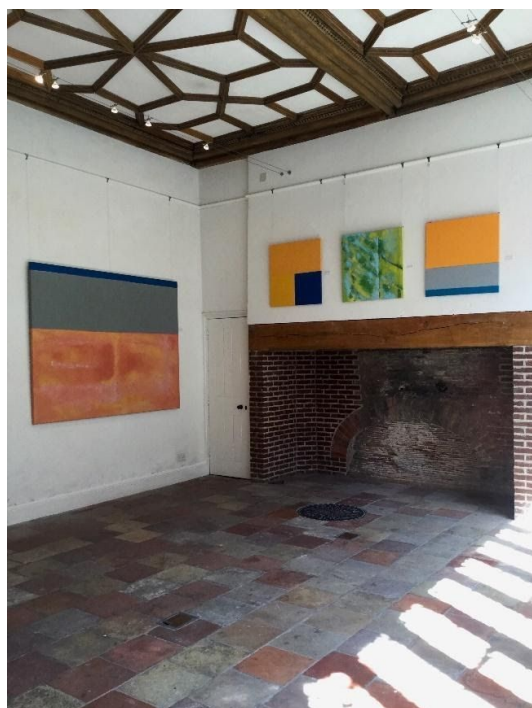
Will the artist or artworks bring new audiences to Anteros?

Will the show benefit a school or educational organisation?

**Could an educational experience be incorporated into, or delivered alongside this show?
(i.e. A workshop or artist's talk?)**

What effect will this show have on Anteros' reputation?

Applications must answer yes to at least one, preferably two of the first four questions listed above.



Main Gallery

Price: £250 for two weeks, (this is the minimum exhibition length).

Anteros is entitled to a 25% sales commission for any sold Artworks (including cards).

This includes:

- Full gallery invigilation. Open times are Tuesday to Saturday 9.30-5pm.
- Tailored assistance with the exhibition installation on the Monday before opening.
- Late Opening View for invited guests plus late access for the public from 6:00-8:00pm on the first Thursday following the installation.
- Marketing on Instagram, Twitter and on our Facebook page with access to over 1,500 followers as well as our mailing list with over 2,600 addresses.
- Support in offering educational content within opening hours during your exhibition.

Features: 13m x 5m space, height 3m. The mullioned timber window is the longest surviving Tudor window in the city and the captivating fireplace also dates back to Tudor times. There is a moulded timber ceiling commissioned in 1543, the floor is paved with Norfolk pavements and there is underfloor heating. Access is both from reception and from a courtyard shared with North cafe.

N.B. This space uses a hanging system, you are not allowed to hammer or drill into the walls.



Front Room:

Price: £200 for two weeks, (this is the minimum exhibition length).

Anteros is entitled to a 25% sales commission for any sold Artworks (including cards).

Includes:

- Full gallery invigilation. Open times are Tuesday to Saturday 9.30-5pm.
- Tailored assistance with the exhibition installation on the Monday before opening.
- Late Opening View for invited guests plus a late access for the public from 6:00-8:00pm on the first Thursday following the installation.
- Marketing on Instagram, Twitter and on our Facebook page with access to over 1,500 followers as well as our mailing list with over 2,600 addresses.
- Support in offering educational content within opening hours during your exhibition.

Features:

6m x 3m. A contemporary bright space with prominent window display facing out onto Fye Bridge St. The gallery space has adjustable light fittings which take GU10s, warm or cool lighting, timber floors, and beautiful natural light.

NB. Please do not hammer or drill into lintel above fireplace please, use existing holes.

General Information:

- We have a selection of plinths that are available for use.
- We **do not** have any AV Equipment, but are happy for you to provide your own.
- Artists are encouraged to provide poster artwork and flyers for their exhibition.
- Installation days are on Monday's 10am -5pm.
- De-Installation days are on Saturday Afternoon's 4pm-5pm.
- The Anteros Arts Foundation does not intend for the cost of hire to present a barrier to exhibitors. If the cost of hire cannot be met, we ask exhibitors to still complete an application form and we will do our best to include and support your exhibition where possible.

If you would like to proceed with an exhibition, please fill out the relevant application form (solo or group show) which is available from the Anteros website and return it to our gallery manager: gallery@anterosfoundation.com

If you have any further questions, please email our Gallery Manager via email:
gallery@anterosfoundation.com

Please note that all of our staff are part time and we thank you for your patience in awaiting a reply.